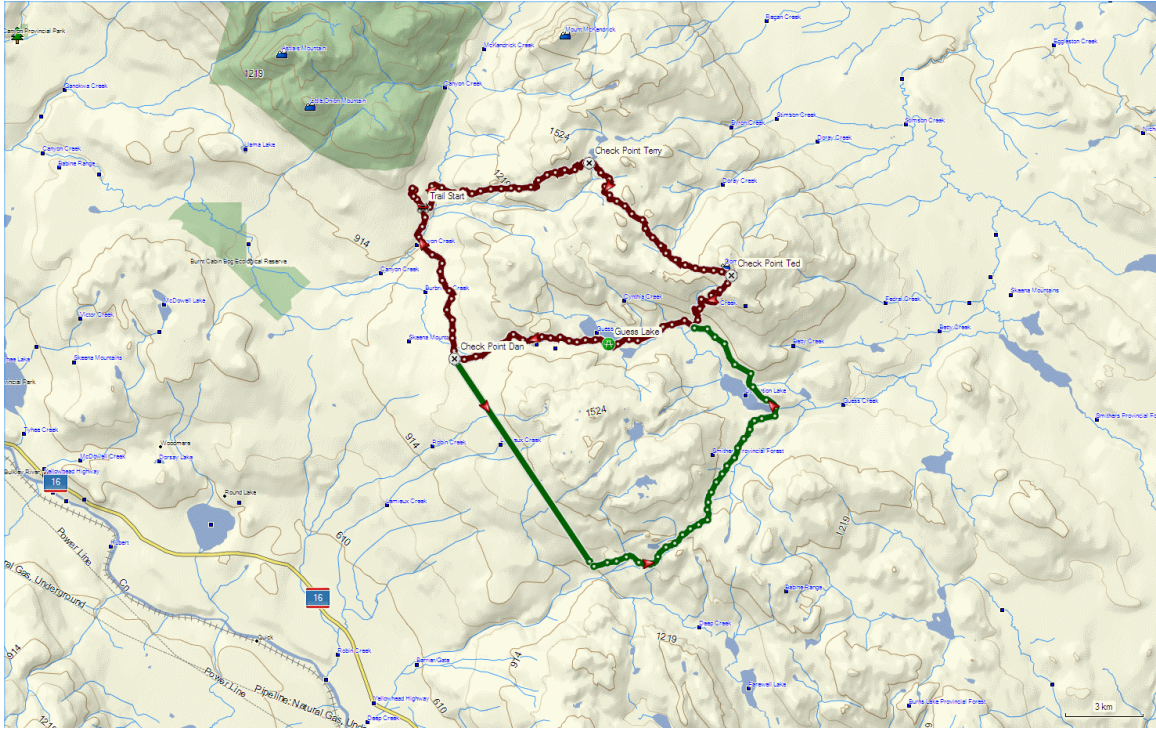


Dome Mountain Alternative
ATV Ride Details

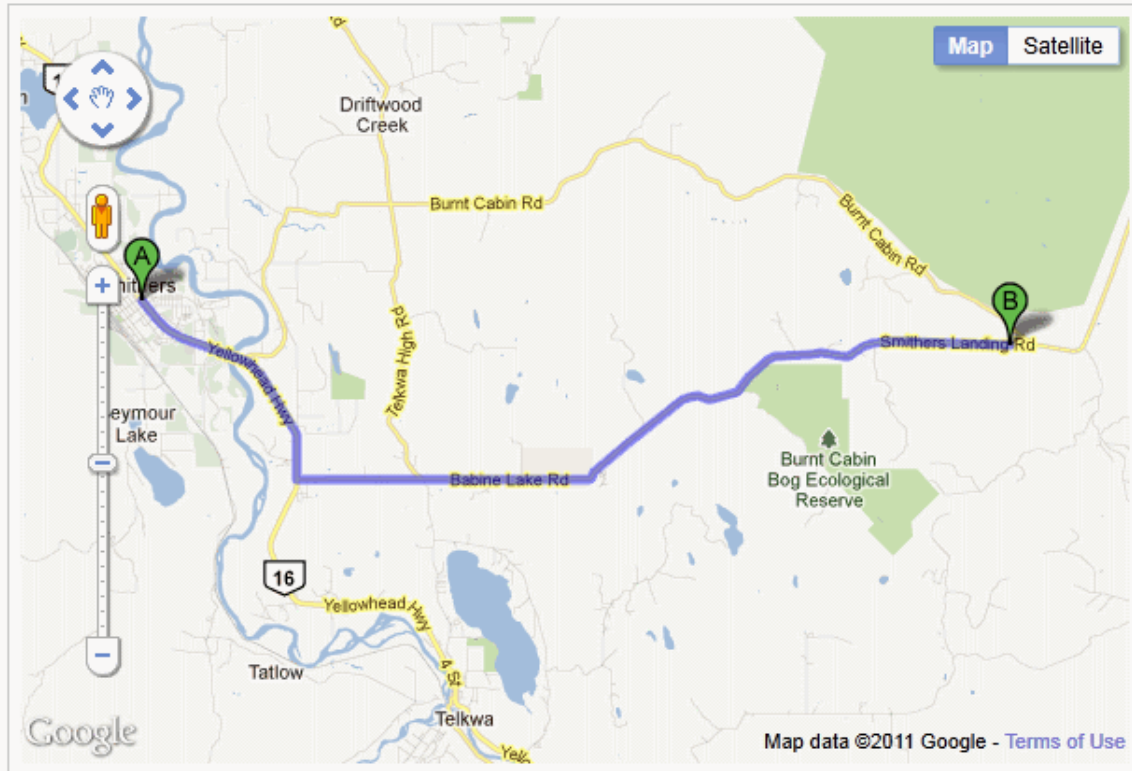
Ride Name:	Dome Mountain Alternative
Season:	Late Spring through Fall
Ride Difficulty	Easy
Parking and Ride Start:	Dome Parking Lot
Start Elevation (metres):	1044
End Elevation (metres):	1644
Maximum Elevation (metres):	1044
Total Kilometres	51.0
Running Time:	NA
Total Time:	4 hours 30 minutes
Moving Average (km/hr):	15.3 km/hr

Notes:
This route follows the Canyon Creek Forest Service Road to about 17 km. (Do not turn easterly at the Deception Lake Road junction, continue straight) Head east on the access trail which will take you around the south end of Deception Lake, then back northerly to the junction of the original ride. Continue easterly up Dome Mountain.

Dome Mountain Alternative ATV Ride Details



Dome Mountain Alternative ATV Ride Details



Driving direction to Dome Parking Lot from Main Street and Highway 16 in Smithers.



Yellowhead Hwy, Smithers, BC V0J 2N3, Canada

24.1 km - about 31 mins

1. Head southeast on Yellowhead Hwy E/BC-16 E toward King St 6.1 km
2. Turn left onto Babine Lake Rd 18.0 km



Smithers Landing Rd, Telkwa, BC V0J 2X0, Canada

Map data ©2011 Google